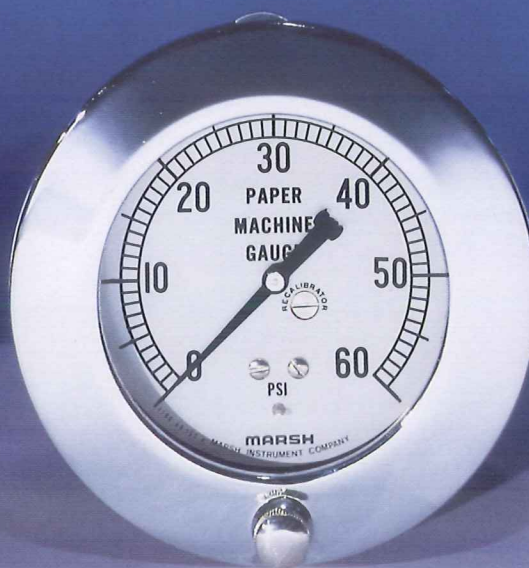
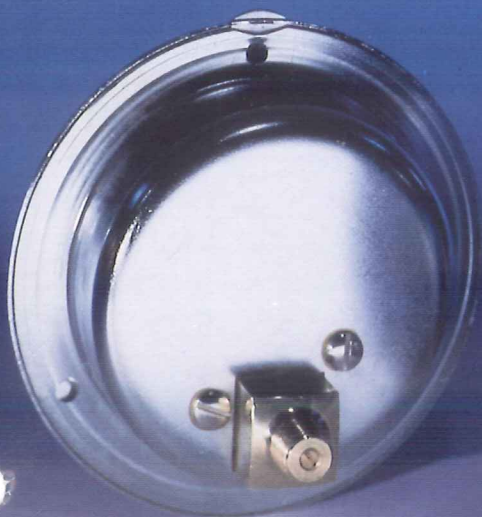


# MARSH®

## Paper Machine Gauges



Select from two pressure-gauge variations specifically designed to meet the demands of the pulp and paper industry.

### Chrome-Plated Paper Machine Gauge

- Heavy-duty chrome-plated steel case construction—front-flanged pattern.
- Specially designed weep hole in back of gauge case allows condensation build-up to drain.
- Exclusive Marsh Recalibrator restores original accuracy.
- Copper alloy tube, tip, and socket.

Weather-tight seal prevents moisture buildup.

- Attractive chrome-plated brass ring, hinged for easy-access recalibration. Ring has a weather-tight seal to protect against atmospheric contaminants and for easy-access cleaning.
- Built-in restrictor to throttle pressure surges and protect gauge internals.

- ANSI B40.1—Grade A accuracy,  $\pm 1\%$  of span in middle half of scale.
- Replacement gauge that fits original equipment panels.

### Polished-Brass Paper Machine Gauge

- Heavy-duty polished-brass case construction.
- Polished-brass screwed ring with beveled-glass lens.
- Exclusive Marsh Recalibrator restores original accuracy.
- Copper alloy tube, tip, and socket.
- Socket restrictor for protection against pressure surges.
- ANSI B40.1—Grade B accuracy,  $\pm 2\%$  of span in middle half of scale.
- Replacement gauge that fits original equipment specifications.



Bourdon tube.

# Chrome-Plated Paper Machine Gauge

## Specifications

**SIZE**—3½" dial size

**CASE**—Chrome-plated steel—front flanged: moisture-proof with weep hole.

**RING**—Chrome-plated brass with weather-tight seal.

**DIAL**—Steel, with black numerals and graduations on white background.

**DIAL RANGE**—30 psi-1,000 psi

**TUBE, TIP, and SOCKET**—Copper alloy

**CONNECTION**—¼" NPT lower-back male

**MOVEMENT**—Brass with recalibrator

**ACCURACY**—ANSI B40.1—Grade A accuracy, ± 1% of span in middle half of scale

**LENS**—Glass

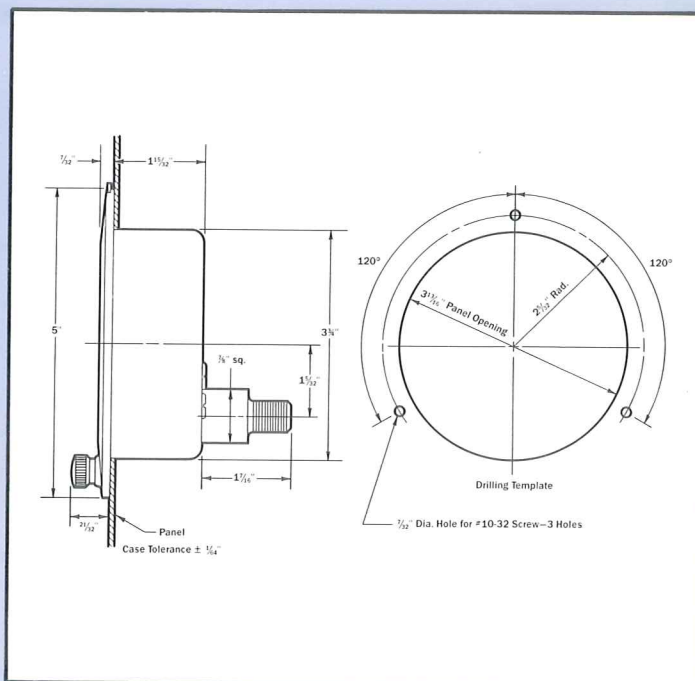
**RESTRICTOR**—#80

## Dial ranges and ordering information

The Marsh Chrome-Plated Paper Machine Gauge is available in 3½" dial size only, with ¼" NPT lower-back male connection. Please state product numbers when ordering.

DIAL RANGES	PART NUMBER	DIAL RANGES	PART NUMBER
0-30 psi	W6042*	0-300 psi	W6058
0-60 psi	W6046*	0-400 psi	W6060
0-100 psi	W6048*	0-600 psi	W6064
0-200 psi	W6054	0-1,000 psi	W6072

\*Normally stocked gauge.



# Polished-Brass Paper Machine Gauge

## Specifications

**SIZE**—3½" dial size

**CASE**—Polished brass

**RING**—Brass, screwed

**DIAL**—Steel, with black numerals and graduations on white background

**DIAL RANGE**—Vacuum 30" Hg—100 psi

**TUBE, TIP, and SOCKET**—Copper alloy

**CONNECTION**—¼" NPT bottom male

**MOVEMENT**—Acculite™ with recalibrator

**ACCURACY**—ANSI B40.1—Grade B accuracy, ± 2% of span in middle half of scale

**LENS**—Beveled glass

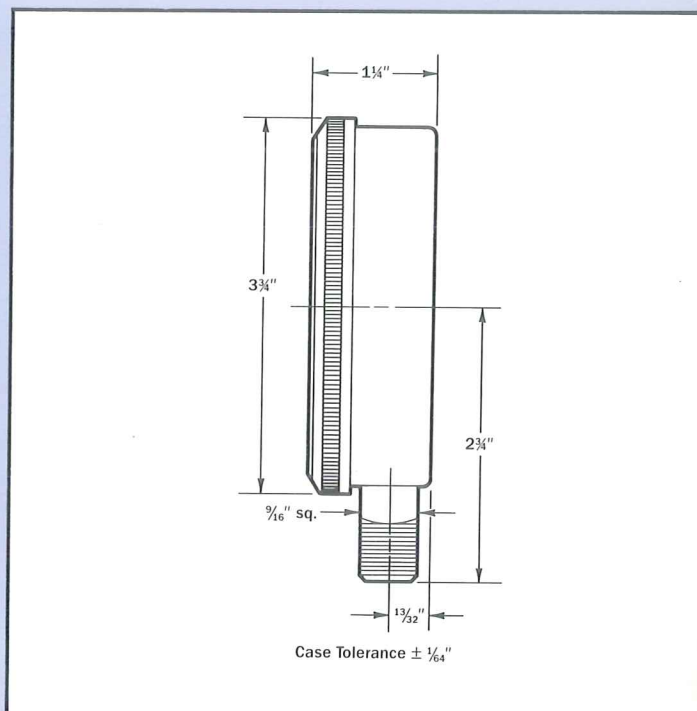
**RESTRICTOR**—#80

## Dial ranges and ordering information

The Marsh Polished-Brass Paper Machine Gauge is available in 3½" dial size only with ¼" NPT bottom male connection. Please state product number when ordering.

DIAL RANGES	PART NUMBER	DIAL RANGES	PART NUMBER
0-30" vac	W5005*	0-60 psi	W5046*
0-30 psi	W5042*	0-100 psi	W5048*

\*Normally stocked gauge.



Marsh Instrument Company  
A UNIT OF GENERAL SIGNAL  
P.O. Box 1011, Skokie, IL 60076  
312/673-4300 • Telex: 72-4477